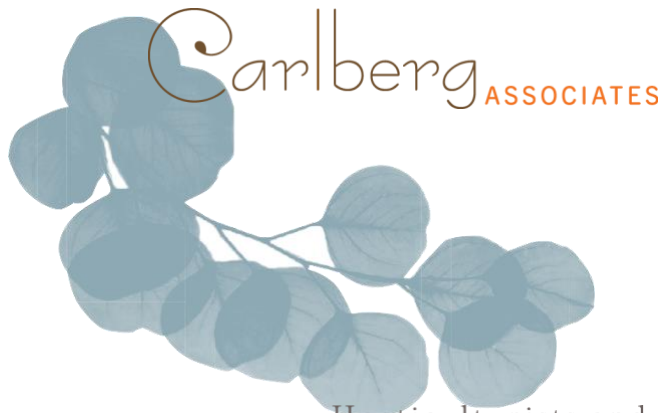


Appendix G

Tree Report



Horticulturists and
Registered Consulting
ARBORISTS

**CITY OF LOS ANGELES TREE REPORT
942 NORTH BROADWAY
LOS ANGELES, CALIFORNIA 90012**

SUBMITTED TO:

**TF BROADWAY LP
11400 WEST OLYMPIC BOULEVARD, SUITE 850
LOS ANGELES, CALIFORNIA 90064**

PREPARED BY:

**CY CARLBERG
ASCA REGISTERED CONSULTING ARBORIST #405
ISA CERTIFIED ARBORIST #WE 0575A
ISA QUALIFIED TREE RISK ASSESSOR
CAUFC CERTIFIED URBAN FORESTER #013**

Santa Monica Office
828 Fifth Street, Suite 3
Santa Monica, California 90403
Office: 310.451.4804

Sierra Madre Office
80 West Sierra Madre Boulevard, #241
Sierra Madre, California 91024
Office: 626.428.5072



MAY 21, 2018

www.cycarlberg.com

942 N. BROADWAY, LOS ANGELES, CALIFORNIA – CITY OF LOS ANGELES TREE REPORT

TABLE OF CONTENTS

COVER LETTER 1

TABLE 1 – TREE INVENTORY 2

EXHIBIT A – AERIAL IMAGE OF SUBJECT PROPERTY 3

EXHIBIT B – REDUCED COPY OF TREE LOCATION MAP 4

EXHIBIT C – TREE PHOTOGRAPHS 5

RESUME 6



May 21, 2018

TF Shatto, LP
11400 West Olympic Boulevard, Suite 850
Los Angeles, California 90064
c/o Ly Tang, Architect AIBC, archi@lytang.com

Re: Mixed-Use Development at 942 North Broadway, Los Angeles, California 90012

Dear TF Broadway LP,

This letter addresses our office's site visit of May 21, 2018 to the property located at 942 N. Broadway in Los Angeles, California. We were retained to visit the property and determine if any trees considered protected by the City of Los Angeles Tree Preservation Ordinance No. 177.044 or significant by the guidelines set forth by the City's Planning Department were present. We inventoried all trees regardless of size.

The table on the following page sets forth the data for the two private property trees and one City right-of-way tree. **None of the private property species are considered protected by the ordinance.** There are no trees on contiguous properties affected by proposed construction. All private property trees are proposed to be removed. The one City right-of-way tree will require removal to accommodate subterranean parking which extends to the west property line. Further, according to City standards, there will be soldier beams or lagging just outside (west of) this property line that will be trimmed at the required depth (approximately eight feet below gutter grade).

Please feel welcome to contact me at our Santa Monica office if you have any immediate questions or concerns.

Respectfully submitted,

Cy Carlberg, Registered Consulting Arborist
Principal, Carlberg Associates

Santa Monica Office
cy@cy Carlberg.com

Santa Monica Office
828 Fifth Street, Suite 3
Santa Monica, California 90403
Office: 310.451.4804

Sierra Madre Office
80 West Sierra Madre Boulevard, #241
Sierra Madre, California 91024
Office: 626.428.5072

www.cycarlberg.com

TABLE 1 – INVENTORY OF TREES (PRIVATE PROPERTY AND RIGHTS-OF-WAY TREES)

Tree #	Common Name	Botanical Name	Dbh(s)* at 4.5 feet (inches)	Height (feet)	Canopy Spread (feet)	Health Grade	Structure Grade	Protected Tree Y/N
1	Indian laurel	<i>Ficus microcarpa</i>	5, 6, 7	20'	25'	A	B	No
2	Chinese flame	<i>Koelreuteria bipinnata</i>	4, 6.5, 10	20'	30'	B	B	No
City of Los Angeles Right-of-Way Trees								
ST1	Hong Kong orchid	<i>Bauhinia x blakeana</i>	12	20'	22'	B	B	Right-of-way

* DBH – diameter at breast height. A forestry term describing a tree trunk’s diameter measured at 4.5 feet above grade. Often used as a representation of tree size.



EXHIBIT A - AERIAL IMAGE OF SUBJECT PROPERTIES



Aerial image of subject properties at
942 N. Broadway, Los Angeles
Image Source: Zimas



EXHIBIT B - REDUCED COPY OT TREE LOCATION MAP
(Full-sized drawing to be part of the submittal)

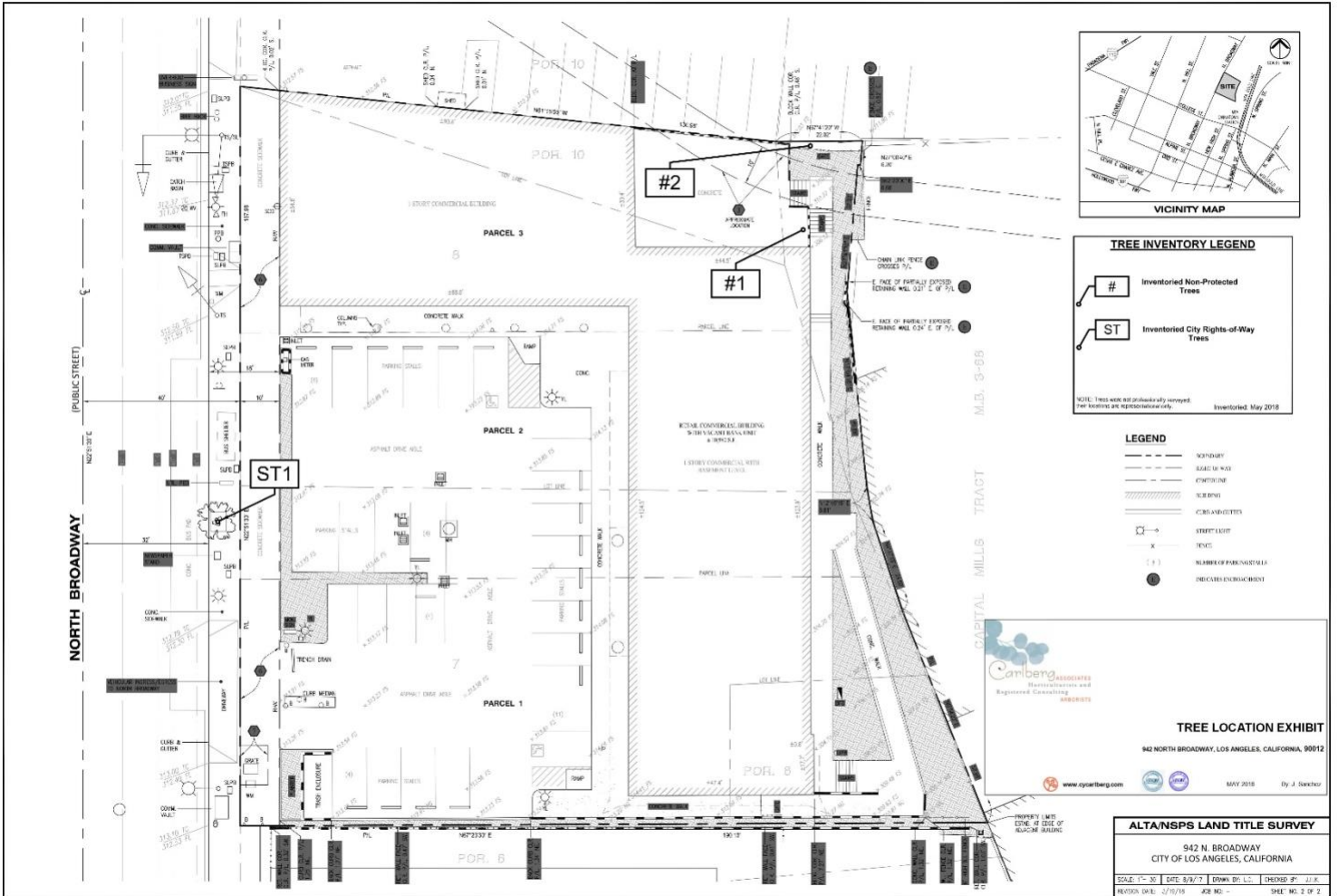


EXHIBIT C – CAPTIONED TREE PHOTOGRAPHS



**Tree No.1
Indian laurel**



**Tree No.2
Chinese Flame**



**Tree ST-1
Hong Kong orchid**



CY CARLBERG

CARLBERG ASSOCIATES

2402 California Avenue, Santa Monica, California 90403
(310) 453-TREE
cy@cyarlberg.com

Education B.S., Landscape Architecture, California State Polytechnic University, Pomona, 1985
Graduate, Arboricultural Consulting Academy, American Society of Consulting Arborists, Chicago, Illinois, February 2002
Graduate, Municipal Forestry Institute, Lied, Nebraska, 2012

Experience Consulting Arborist, Carlberg Associates, 1998-present
Manager of Grounds Services, California Institute of Technology, Pasadena, 1992-1998
Director of Grounds, Scripps College, Claremont, 1988-1992

Certificates Certified Arborist (#WE-0575A), International Society of Arboriculture, 1990
Registered Consulting Arborist (#405), American Society of Consulting Arborists, 2002
Certified Urban Forester (#013), California Urban Forests Council, 2004
Certified Tree Risk Assessor (#1028), International Society of Arboriculture, 2011

AREAS OF EXPERTISE

Ms. Carlberg is experienced in the following areas of tree management and preservation:

- Tree health and risk assessment
- Master Planning
- Tree inventories and reports to satisfy jurisdictional requirements
- Expert Testimony
- Post-fire assessment, valuation, and mitigation for trees and native plant communities
- Value assessments for native and non-native trees
- Pest and disease identification
- Guidelines for oak preservation
- Selection of appropriate tree species
- Planting, pruning, and maintenance specifications
- Tree and landscape resource mapping – GPS, GIS, and AutoCAD
- Planning Commission, City Council, and community meetings representation

PREVIOUS CONSULTING EXPERIENCE

Ms. Carlberg has overseen residential and commercial construction projects to prevent damage to protected and specimen trees. She has thirty-five years of experience in arboriculture and horticulture and has performed tree health evaluation, value and risk assessment, and expert testimony for private clients, government agencies, cities, school districts, and colleges. Representative clients include:

The Huntington Library and Botanical Gardens	The City of Claremont
The Los Angeles Zoo and Botanical Gardens	The City of Beverly Hills
The Rose Bowl and Brookside Golf Course, Pasadena	The City of Pasadena
Walt Disney Concert Hall and Gardens	The City of Los Angeles
The Art Center College of Design, Pasadena	The City of Santa Monica
Pepperdine University	Santa Monica/Malibu Unified School District
Loyola Marymount University	San Diego Gas & Electric
The Claremont Colleges (Pomona, Scripps, CMC, Harvey Mudd,	Los Angeles Department of Water and Power
Claremont Graduate University, Pitzer, Claremont University Center)	Rancho Santa Ana Botanic Garden, Claremont
Quinn, Emanuel, Urquhart and Sullivan (attorneys at law)	Latham & Watkins, LLP (attorneys at law)

AFFILIATIONS

Ms. Carlberg serves with the following national, state, and community professional organizations:

- California Urban Forests Council, Board Member, 1995-2006
- Street Tree Seminar, Past President, 2000-present
- American Society of Consulting Arborists Academy, Faculty Member, 2003-2005, 2014
- American Society of Consulting Arborists, Board of Directors, 2013-Present
- Member, Los Angeles Oak Woodland Habitat Conservation Strategic Alliance, 2010-present

